



LEO پمپ لئو



kalasanati.com



[@kalasanati.ir](https://www.instagram.com/kalasanati.ir)

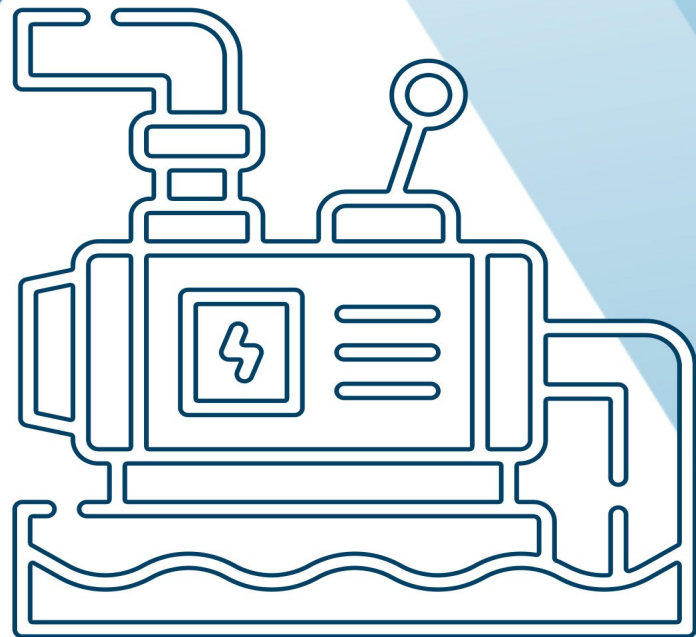


[+982188544230](tel:+982188544230)

Catalog 2021

PUMP

www.kalasanati.com



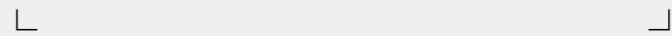
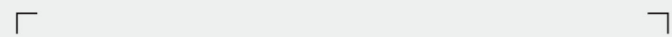
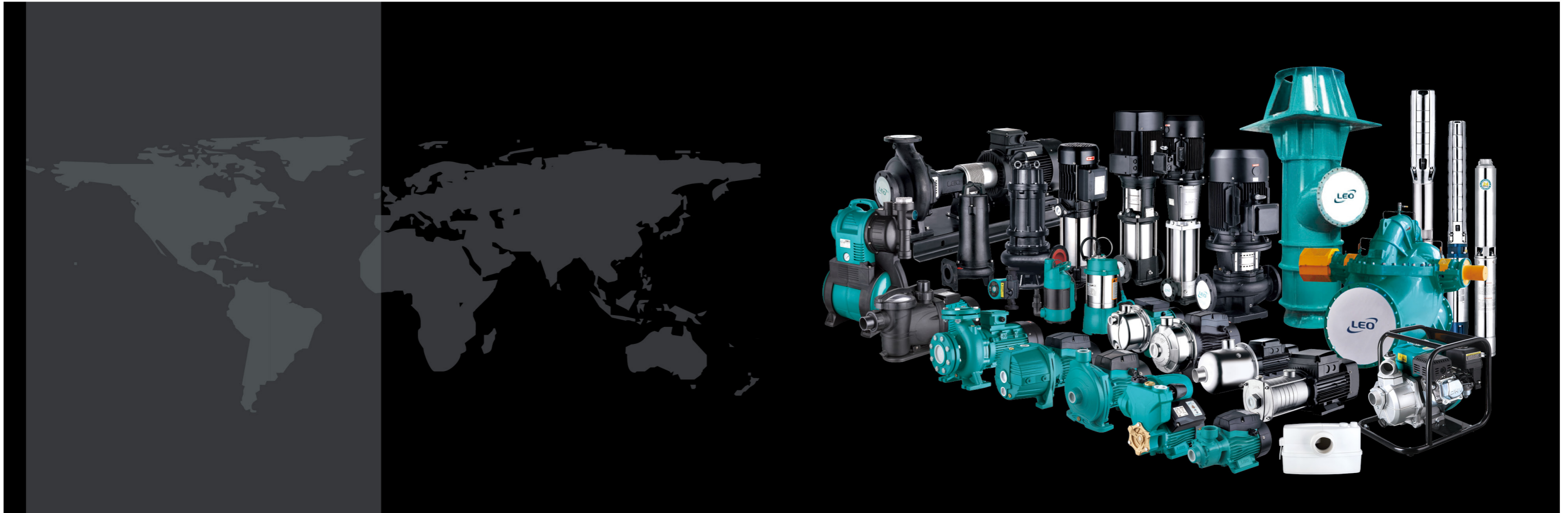


Pump

Kalasanati.com



Kalasanati.com



No.1, 3rd Street, East Industry Center, Wenling, Zhejiang, China, 317511

Tel: +86-576-8998 6360

Fax: +86-576-8998 9898

E-mail: export@leogroup.cn

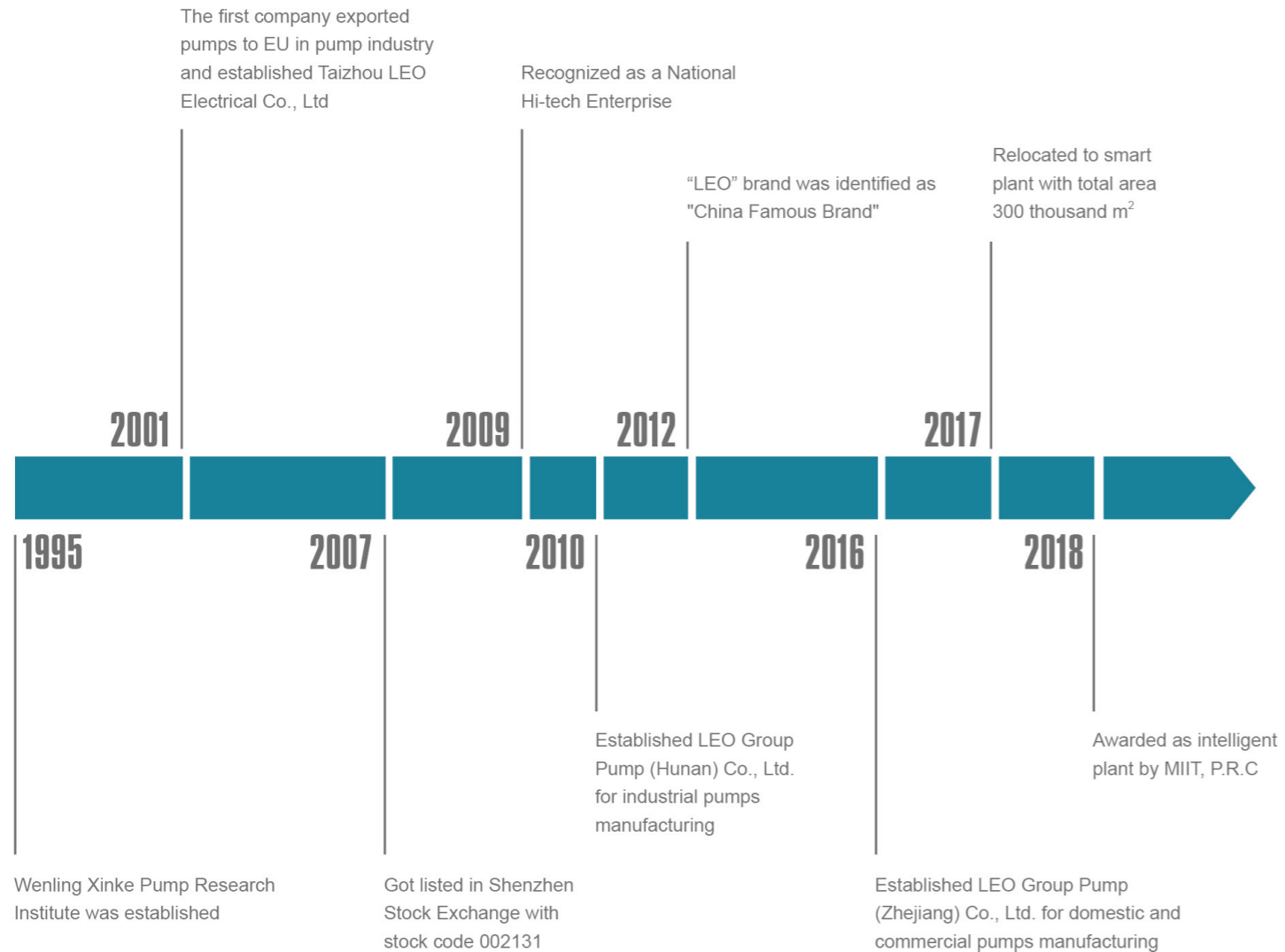
www.leogroup.cn



LEO GROUP PUMP(ZHEJIANG) CO.,LTD.

www.leogroup.cn

HISTORY



LEO[®] and LEPONO[®] are registered trademarks of LEO group.

© LEO Group Co.,Ltd. All rights reserved.

BRIEF OVERVIEW IN NUMBERS

- 1st public company in Chinese pump industry
- 4 production bases in China
- In 140 countries you may find LEO pumps
- 4,000 employees are working at LEO
- 6,000,000 pieces of pumps are produced every year
- 60,000,000 pieces of pumps were produced in the past 20 years



Kalasanati.com

NUMEROUS MEMBERS, ONE FAMILY

Based on market segment, LEO's pump business is divided into 5 fields, namely water conservancy & water resources, power station, petrochemical industry, mining & metallurgical industry and civilian applications. For each field there's a professional manufacturing base with relevant professional sales teams. Three subsidiary companies, Wuxi LEO Xi Pump, LEO Group Pump (Hunan) and Dalian LEO Pump are all well-known industrial pump manufacturers in their own fields. With over 70 years industrial pump manufacturing experience and extraordinary comprehensive strength, LEO has become a leading company among all industrial pump manufacturers in China.



Pump Manufacturing Base for Domestic and Commercial Applications (Wenling City, Zhejiang Province)

LEO Group Pump (Zhejiang) Co., Ltd, a wholly-owned subsidiary of LEO Group Co., Ltd, is the core base for R&D, manufacturing, sales and service of domestic and commercial pumps for family water supply, pipeline boosting, garden and field irrigation, HVAC, etc.

The leading products include peripheral pump, jet pump, centrifugal pump, garden submersible pump, fountain pump, pool pump, doestic lifting station, gasoline engine pump, diesel engine pump, submersible pump, submersible borehole pump, submersible sewage pump, stainless steel vertical multistage pump, etc.

The product range covers 15 series with over 2,000 specifications, which are well sold in more than 140 countries and regions. The base has established steady cooperative relationships with world-class pump manufacturers, importers, dealers and supermarkets.



Pump Manufacturing Base for General Industrial Pumps (Xiangtan City, Hunan Province)

Established in 2010, LEO Group Pump (Hunan) Co., Ltd. is a wholly-owned subsidiary by LEO Group Co., Ltd. Located in Jiuhua Economic Development Zone of Xiangtan City, Hunan Province. Covers an area of 85,000m² and construction area is about 92,635 m² with total investment of approximately 74 million dollars.

It is the most important R&D, manufacturing and testing center of LEO Group. The leading products include large mixed flow and axial flow pump (vertical, horizontal, oblique, tubular, submersible etc.), double-suction centrifugal pump, multistage centrifugal pump, slurry pump, desulphurization pump and submersible centrifugal pump. Products are mainly used in mine, metallurgy, coal washing, FGD, municipal water etc.



Pump Manufacturing Base for Water Conservancy & Water Resources (Wuxi City, Jiangsu Province)

Formerly known as Wuxi Xi Pump Manufacturing Co., Ltd., a well-known manufacturer of water conservancy, is specialized in large and medium-sized pumps production for urban water supply and drainage, farmland irrigation, water conservancy projects and large water diversion project. The main products cover 32 series with nearly 1000 specifications. Products exported to more than 20 countries in Asia, Latin-America, Europe and Oceania.

As a main supplier, the base provides large pumps for South-to-North Water Diversion Project—a national key project. There are over 140 technicians, including 1 professor level senior engineer, 16 senior engineers, and 39 engineers.



Pump Manufacturing Base for Petrochemical Industry (Dalian City, Liaoning Province)

It is the pump manufacturing base for petrochemical industry, combined with Dalian LEO Huaneng Pump Co., Ltd and LEO (Dalian) Industrial Pump Technology Center Co., Ltd.

Formerly known as Dalian Huaneng Corrosion-Resistant Pump Works, the base is specialized in production of petrochemical pumps for crude oil transportation, crude oil refinery, heavy chemical industry, coal chemical industry and fine chemistry, etc. The base focuses on design and manufacture of 30 series (OH, BB, VS, etc.) of petrochemical pumps with over 3000 specifications, which are in accordance with API and ISO standard.

LEO (Dalian) Industrial Pump Technology Center Co., Ltd. is one of the research branch of national level technology center for petrochemical pumps, specializes in R&D, design of pumps of petro chemistry, coal chemical industry, long-distance transport pipes, energy resources, fine chemicals industry, etc. Design and develop software and large laboratories, explore liquid transport schemes under severe conditions and solve the difficult projects of ultralow temperature, high temperature, high pressure, low cavitation, highly corrosive, energy recovery, etc.



CONTENTS

1 Domestic Pump & Commercial Pump

APm	01	AKS	10
AQm	01	EKJ	10
APSm	01	LKS	10
APSm-AT	01	LKS-SE	10
LKSm-A/LKSm	02	LSPA	11
AKSm	02	XKP	11
AJm	02	WC	11
AJm-S	02	LDP	11
AJDm	03	LGP-C	12
ACm/ACm-C	03	LGP20i-A	12
ACm-BF/ACm-B2/ACm-B3	03	LGP-T/LGP-W	12
2ACm/3ACm/4ACm	03	LGP20-T	12
XGm	04	KB/PB/LB	13
XHSm	04	BRP	13
3ACm/4ACm/5ACm	04	LRP	13
3ACSm/4ACSm/5ACSm	04	LRP-A	13
3XCm-C/4XCm-C/5XCm-C	05	LPm	14
SPm	05	LP	14
QDX-(L)	05	ABK	14
XQS	05	AMS	14
XSP	06	ECH-D	15
USC/AEFV	06	ECH-F	15
SW-L	06	ECH/EDH	15
WQ	06	ECH/EDH-E	15
KBZ	07	BP	16
KBS	07	MAC	16
5DW	07	XST	16
4DWP	07	XZS	16
3"/4"/6"XR(P)	08	LEP	17
4"/6"XRS	08	LEN	17
4LST	08	GSX	17
LPS	08	GS	17
6"/8"/10" LS	09	LPP	18
6"LN	09	EVP	18
6"/8"/10" LC	09	LVS/LVR	18
XKF	09	BWS	18

2 Industrial Pump

D/MD	19	OH (OH-3)	22
HLB/HLBK	19	A (BB1)	22
WLZ/WZY	19	HR (BB2)	22
LC	19	MA (BB3)	23
GLN	20	M (BB4)	23
ZLB (Q)	20	T (BB5)	23
HD (S)	20	HY/HL/HRY (VS4)	23
QZ/QHD	20	TV (VS1/VS6)	24
QW	21	HT	24
LW	21	HLB/HNB (VS5)	24
OH (OH-1/2)	22		

3 Accessories

FIX MEMBRANE TANK	25	PRESSURE GAUGE	26
TANK	25	FLEXIBLE HOSE	26
ELECTROMAGNETIC SWITCH	25	HOSE	26
INTELLIGENT CONTROLLER	25	3-WAY/5-WAY	26
FLOAT SWITCH	25	FOOT VALVE	26
PRESSURE SWITCH	25	FILTER	26



APm

Peripheral Pump

Technical Data

- Max. flow: 90 l/min
- Max. head: 100 m
- Power range: 0.3 - 2.2 kW (0.4 - 3 HP)
- Inlet/Outlet: 1"/1"; 3/4"/3/4"

Applications

- Transfer of clean water or other liquids similar to water in physical and chemical properties
- Domestic water supply with pressure boosting
- Automatic water sprinkler system
- Small air conditioning system

Features

- Copper winding
- Brass impeller
- Built-in thermal protector
- Anti-block system
- Anti-rust treatment for wetted parts
- AISI 304 fabricated shaft
- Low voltage operation
- Insulation class: F
- Protection class: IPX4



APSm

Self-priming Peripheral Pump

Technical Data

- Max. flow: 70 l/min
- Max. head : 65 m
- Power range: 0.37 - 1.1 kW (0.5 - 1.5 HP)
- Inlet/Outlet: 1"/1"; 1 1/2 "/1 1/2 "

Applications

- Transfer of clean water or other liquids similar to water in physical and chemical properties
- Domestic water supply with pressure boosting
- Automatic water sprinkler system
- Small air conditioning system

Features

- Copper winding
- Brass impeller
- Built-in terminal protector
- Anti-block system
- Anti-rust treatment for wetted parts
- AISI 304 fabricated shaft
- Cast iron connector
- Low voltage operation
- Insulation class: F
- Protection class: IPX4



AQm

Peripheral Pump

Technical Data

- Max. flow: 45 l/min
- Max. head : 75 m
- Power range: 0.37 - 0.75 kW (0.5 - 1 HP)
- Inlet/Outlet: 1"/1"

Applications

- Transfer of clean water or other liquids similar to water in physical and chemical properties
- Domestic water supply with pressure boosting
- Automatic water sprinkler system
- Small air conditioning system

Features

- Copper winding
- Brass impeller
- Built-in thermal protector
- Anti-rust treatment for wetted parts
- AISI 304 fabricated shaft
- Insulation class: F
- Protection class: IPX4



APSm-AT

Self-priming Peripheral Pump

Technical Data

- Max. flow: 45 l/min
- Max. head : 45 m
- Power range: 0.25 - 0.75 kW (0.33 - 1 HP)
- Inlet/Outlet: 1" x 1"

Applications

- Transfer of clean water or other liquids similar to water in physical and chemical properties
- Domestic water supply with pressure boosting
- Automatic water sprinkler system
- Small air conditioning system

Features

- 2-second time delay of pump start after plugging into the socket to avoid potential danger caused by electric sparks
- Automatic stop in 6 minutes in case of no water inside
- Automatic 10-second operation every 12 hours for anti-block protection in case of no use for long time



LKSm-A/LKSm

Automatic Self-priming
Peripheral Pump

Technical Data

- Max. flow: 70 l/min
- Max. head : 60 m
- Power range: 0.125 - 1.1 kW (0.17 - 1.5 HP)
- Inlet/Outlet: 1 1/2 "/1 1/2 "

Applications

- Transfer of clean water or other liquids similar to water in physical and chemical properties
- Domestic water supply with pressure boosting
- Automatic water sprinkler system
- Small air conditioning system

Features

- Copper winding
- Brass impeller
- Built-in terminal protector
- Anti-rust treatment for wetted parts
- AISI 304 fabricated shaft
- Cast iron connector
- Insulation class: F
- Protection class: IPX4



AJm

Jet Pump

Technical Data

- Max. flow: 160 l/min
- Max. head : 85 m
- Power range: 0.3 - 2.2 kW (0.4 - 3 HP)
- Inlet/Outlet: 1"/1"; 1 1/4 "/1"; 1 1/2 "/1 1/2 "

Applications

- Transfer of clean water or other liquids similar to water in physical and chemical properties
- Lifting water from wells
- Garden irrigation
- Pressure boosting

Features

- Copper winding
- Stainless steel impeller
- Built-in terminal protector
- Anti-rust treatment for wetted parts
- AISI 304 fabricated shaft
- Low voltage operation
- Insulation class: F
- Protection class: IPX4



AKSm

Self-priming
Peripheral Pump

Technical Data

- Max. Flow: 35 l/min
- Max. Head: 32 m
- Power range: 0.155 kW (0.2 HP)
- Max. Suction: 8 m
- Inlet/Outlet: 1"/1"

Applications

- Transfer clean water or other liquids similar to water in physical and chemical properties
- Small living water supply, automatic water sprinkler system, small air conditioner system or supporting equipment etc

Features

- Copper winding
- Brass impeller
- Brass pump bonnet
- AISI 304
- 3 seconds time delay start
- Automatic start/stop
- Small flow condition
- Built-in terminal protector
- Low voltage operation
- Insulation class: F
- Protection class: IPX4



AJm-S

Stainless Steel Jet Pump

Technical Data

- Max. flow: 60 l/min
- Max. head : 48 m
- Power range: 0.3 - 0.9 kW (0.4 - 1.2 HP)
- Inlet/Outlet: 1"/1"

Applications

- Transfer of clean water or other liquids similar to water in physical and chemical properties
- Lifting water from wells
- Garden irrigation
- Pressure boosting

Features

- Copper winding
- Stainless steel pump body
- Stainless steel impeller
- Built-in terminal protector
- Anti-rust treatment for wetted parts
- AISI 304 fabricated shaft
- Low voltage operation
- Insulation class: F
- Protection class: IPX4



Technical Data

- Max. flow: 34 l/min
- Max. head : 75 m
- Power range: 0.55 - 1.1 kW (0.75 - 1.5 HP)
- Inlet/Outlet: 1 1/4"/1"

Applications

- Transfer of clean water or other liquids similar to water in physical and chemical properties
- Lifting water from wells with depth more than 9 m
- Garden irrigation
- Pressure boosting

Features

- Copper winding
- High suction up to 40 m
- Stainless steel impeller
- Built-in terminal protector
- Anti-rust treatment for wetted parts
- AISI 304 fabricated shaft
- Low voltage operation
- Insulation class: F
- Protection class: IPX4



Technical Data

- Max. flow: 900 l/min
- Max. head: 56.5 m
- Power range: 0.25 - 7.5 kW (0.3 - 10 HP)
- Inlet/Outlet: 1"/1"; 1 1/4"/1"; 2"/2"; 4"/3"; 1 1/2"/1"

Applications

- Transfer of clean water or other liquids similar to water in physical and chemical properties
- Domestic water supply
- Pressure boosting for high buildings
- Garden irrigation and agricultural irrigation
- Industrial use

Features

- Copper winding
- Built-in terminal protector
- Anti-rust treatment for wetted parts
- AISI 304 fabricated shaft
- Low voltage operation
- Insulation class: F
- Protection class: IPX4



Technical Data

- Max. flow: 245 l/min
- Max. head: 17.5 m
- Power range: 0.6 - 0.75 kW (0.8 - 1 HP)
- Inlet/Outlet: 1 1/2"/1 1/2"

Applications

- Transfer of clean water or other liquids similar to water in physical and chemical properties
- Pumping water from lake, river or well
- Agricultural irrigation
- Industrial use

Features

- Copper winding
- Semi-open impeller
- Built-in terminal protector
- Anti-rust treatment for wetted parts
- AISI 304 fabricated shaft
- Insulation class: F
- Protection class: IPX4



Technical Data

- Max. flow: 330 l/min
- Max. head: 20.5 m
- Power range: 1.1 - 1.5 kW (1.5 - 2 HP)
- Inlet/Outlet: 2"/2"

Applications

- Transfer of clean water or other liquids similar to water in physical and chemical properties
- Pumping water from lake, river or well
- Agricultural irrigation
- Industrial use

Features

- Copper winding
- Built-in terminal protector
- Open type cast iron impeller
- Insulation class: F
- Protection class: IPX4



Technical Data

- Max. flow: 1600 l/min
- Max. head: 23.9 m
- Power range: 0.6 - 4 kW (0.8 - 5.5 HP)
- Inlet/Outlet: 2"/2"; 3"/3"; 4"/4"

Applications

- Transfer of clean water or other liquids similar to water in physical and chemical properties
- Water transfer from lake, river and well
- Agricultural irrigation
- Industrial use

Features

- Built-in terminal protector
- Anti-rust treatment for wetted parts
- AISI 304 fabricated shaft
- Low voltage operation
- Insulation class: F
- Protection class: IPX4



Technical Data

- Max. flow: 250 l/min
- Max. head: 82 m
- Power range: 0.45 - 4 kW (0.6 - 5.5 HP)
- Inlet/Outlet: 1"/1"; 1 1/2"/1"; 1 1/2"/1 1/4"; 1 1/4"/1"

Applications

- Transfer of clean water or other liquids similar to water in physical and chemical properties
- Agricultural irrigation
- Industrial use
- Pressure boosting
- Fire fighting

Features

- Copper winding
- Built-in terminal protector
- Anti-rust treatment for wetted parts
- AISI 304 fabricated shaft
- Low voltage operation
- Insulation class: F
- Protection class: IPX4



Technical Data

- Max. flow: 100 l/min
- Max. head: 55 m
- Power range: 0.6 - 0.9 kW (0.8 - 1.25 HP)
- Inlet/Outlet: 1"/1"

Applications

- Transfer of clean water or other liquids similar to water in physical and chemical properties
- Agricultural irrigation
- Industrial use
- Pressure boosting
- Fire fighting

Features

- Copper winding
- Built-in terminal protector
- Anti-rust treatment for wetted parts
- AISI 304 fabricated shaft
- Insulation class: F
- Protection class: IPX4



Technical Data

- Max. flow: 100 l/min
- Max. head: 55 m
- Power range: 0.6 - 0.9 kW (0.8 - 1.25 HP)
- Inlet/Outlet: 1"/1"

Applications

- Transfer of clean water or other liquids similar to water in physical and chemical properties
- Agricultural irrigation
- Industrial use
- Pressure boosting
- Fire fighting

Features

- Copper winding
- Built-in terminal protector
- Anti-rust treatment for wetted parts
- AISI 304 fabricated shaft
- Insulation class: F
- Protection class: IPX4





3XCm-C 4XCm-C 5XCm-C

Stainless Steel Multistage Centrifugal Pump

Technical Data

- Max. flow: 84 l/min
- Max. head: 56.5 m
- Power range: 0.6 - 0.9 kW (0.8 - 1.2 HP)
- Inlet/Outlet: 1"/1"

Applications

- Transfer of clean water or other liquids similar to water in physical and chemical properties
- Agricultural irrigation
- Pressure boosting
- Industrial use

Features

- Copper winding
- Built-in terminal protector
- Anti-rust treatment for wetted parts
- AISI 304 fabricated shaft
- Insulation class: F
- Protection class: IPX4



SPm

Submersible Peripheral Pump

Technical Data

- Max. flow : 33.4 l/min
- Max. head : 41.4 m
- Power range: 0.37 kW (0.5 HP)
- Outlet: 1"

Applications

- Can be used to transfer clean water or other liquids similar to water in physical and chemical properties
- Suitable for small living water supply, automatic water sprinkler system, small air conditioner system or supporting equipment etc.

Features

- Copper winding
- Brass impeller
- Built-in terminal protector
- Anti-rust treatment for wetted parts
- AISI 304 fabricated shaft
- Insulation class: F
- Protection class: IPX8



XSP

Stainless Steel Submersible Sewage Pump

Technical Data

- Max. flow: 700 l/min
- Max. head: 22 m
- Power range: 0.18 - 2.2 kW (0.25 - 3 HP)
- Outlet: 1¼"; 1½"; 2"; 2½"; 3"

Applications

- Wastewater drainage in factories, construction sites and commercial facilities
- Drainage system in municipal sewage treatment plants
- Drainage station in residential quarters
- Methane pools and filed irrigation in countryside

Features

- Copper winding
- Built-in terminal protector
- AISI 304 fabricated shaft
- Automatic start and stop with float switch
- Insulation class: B
- Protection class: IP68



USC/AEFV

Submersible Sewage Pump

Technical Data

- Max. flow : 22.5 m³/h
- Max. head : 11.5 m
- Power range: 0.25~0.56 kW
- Outlet: 1.5" ; 2"

Applications

- Suitable to be immersed in water for lifting from well or the pool, and draining water from the basement
- Can be used to transfer dirty water or other liquids similar to water in physical and chemical properties
- Can be used in mine, pipe pressure and residential water supply

Features

- AISI 304 shaft
- Insulation class: B
- Protection class: IP68



QDX-(L)

Submersible Pump

Technical Data

- Max. flow: 750 l/min
- Max. head: 32.5 m
- Power range: 0.25 - 1.1 kW (0.3 - 1.1 HP)

Applications

- Small electrical irrigation and drainage equipments
- Particularly applied in urban well water pumping, Field irrigation and drainage, garden irrigation and household water supply, as well as drainage of industrial accumulated water, water supply and drainage for construction, livestock breeding, etc.

Features

- Copper winding
- Built-in terminal protector
- AISI 304 fabricated shaft
- Automatic start and stop with float switch
- Insulation class: B
- Protection class: IP68
- Cast iron motor case & aluminum motor case both available



XQS

Stainless Steel Submersible Pump

Technical Data

- Max. flow: 650 l/min
- Max. head: 42 m
- Power range: 0.25 - 1.5 kW (0.33 - 2 HP)
- Outlet: 1"; 1¼"; 2"; 2½"

Applications

- Small electrical irrigation and drainage equipments
- Particularly applied in urban well water pumping, Field irrigation and drainage, garden irrigation and household water supply, as well as drainage of industrial accumulated water, water supply and drainage for construction, livestock breeding, etc.

Features

- Copper winding
- Built-in terminal protector
- AISI 304 fabricated shaft
- Automatic start and stop with float switch
- Insulation class: B
- Protection class: IP68



SW-L

Submersible Sewage Pump

Technical Data

- Max. flow: 300 m³/h
- Max. head: 50 m
- Power range: 0.55 - 7.5 kW (0.75 - 10 HP)

Applications

- Garden watering
- Drainage of agricultural sewage water
- Drainage in buildings and construction sites
- Domestic and municipal drainage
- Industrial drainage for food, leather, paper pulp, dyeing and printing, etc.

Features

- Varieties of impeller types available
 - SWE-L (Enclosed channel impeller)
 - SWU-L (Semi-open vortex impeller)
 - SWP-L (Semi-open vortex impeller with cutter)
- Detachable cable design
- Reliable sealing design
- Insulation class: F
- Protection class: IPX8



WQ

Submersible Sewage Pump

Technical Data

- Max. flow: 1080 m³/h
- Max. head: 52 m
- Power range: 0.75 - 45 kW (1 - 60 HP)

Applications

- Wastewater drainage in factories, construction sites and commercial facilities
- Drainage system in municipal sewage treatment plants
- Drainage station in residential quarters
- Municipal projects
- Methane pools and field irrigation in countryside

Features

- Leak-proof detector
- Dual mechanical seal
- Oil jacket
- Insulation class: F
- Protection class: IPX8





KBZ

Submersible Dewatering Pump

Technical Data

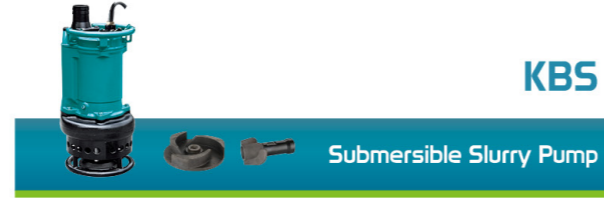
- Max. flow: up to 156 m³/h
- Max. head: up to 56 m
- Max. immersion depth: 25 m
- Power range: 1.5 - 15 kW (2 - 20 HP)

Applications

- Civil engineering
- Mines, quarries, Coal ore & slurries
- Sewage treatment plants
- General pumping purposes

Features

- Copper winding
- Insulation class: B
- Protection class: IP68



KBS

Submersible Slurry Pump

Technical Data

- Max. flow: up to 192 m³/h
- Max. head: up to 21.5 m
- Max. immersion depth: 25 m
- Power range: 1.5 - 15 kW (2 - 20 HP)

Applications

- Civil engineering
- Mines, quarries, Coal ore & slurries
- Sewage treatment plants
- General pumping purposes
- Pumping fluid: sludge, liquids containing mud and bentonite

Features

- Copper winding
- Insulation class: B
- Protection class: IP68



3"/"4"/"6" XR(P)

Submersible Borehole Pump

Technical Data

- Max. flow: 1200 l/m
- Max. head: 450 m
- Power range: 0.18 - 30 kW (0.25 - 40 HP)

Applications

- For water supply from wells or reservoirs
- For domestic use, for civil and industrial applications
- Agricultural irrigation

Features

- Minimum well diameter: 3"
- Maximum immersion: 80 m



4"/"6" XRS

Submersible Borehole Pump

Technical Data

- Max. flow: 1300 l/m
- Max. head: 561 m
- Power range: 0.37 - 30 kW (0.5 - 40 HP)

Applications

- For water supply from wells or reservoirs
- For domestic use, for civil and industrial applications
- Agricultural irrigation

Features

- Minimum well diameter: 4"
- Maximum immersion: 80 m



5DW

Submersible Borehole Pump

Technical Data

- Max.Flow: 183 l/min
- Max.Head: 99 m
- Power range: 0.55 - 1.5 (0.75 - 2 HP)
- Min. immersion: 100 mm
- Max. immersion: 20 m
- Min. well diameter: 5"

Applications

- Lift water from wells or reservoirs
- Domestic, industrial and civil water supply
- Garden use and irrigation

Features

- Rewindable motor
- Insulation class: F
- Protection class: IP68



4DWP

Submersible Borehole Pump

Technical Data

- Max. flow: 45 l/min
- Max. head : 110 m
- Power range : 0.75 - 1.5kW (1-2 HP)
- Max. immersion: 50 m
- Min. well diameter: 4"

Applications

- Lift water from wells or reservoirs
- Domestic, industrial and civil water supply
- Garden use and irrigation

Features

- Rewindable motor
- Can equip with control box



4LST

Submersible Borehole Pump

Technical Data

- Max. flow: 400 l/min
- Max. head: 367 m
- Max. solid content: 0.1 %
- Max chlorine content: 400 mg/L
- Min well diameter: 4"

Applications

- Transfer clean water contains sand (up to 0.1%)
- Supply water from wells or reservoirs
- Domestic, industrial and garden application

Features

- Sand resistant construction
- NEMA dimension standards
- Equipped with start control box for single phase
- Digital auto-control box available on request for three phase



LPS

Solar Submersible Pump Systems

Technical Data

- Max. flow: 40.8 m³/h
- Max. head: 162 m
- Max. input power: 3.0 kW
- AC voltage range: 1x60-300 VAC , 50-60Hz
- DC voltage range: 60 - 400 VDC
- Min well diameter: 4" , 5" , 6"

Applications

- Offer wide range water supply options
- Offer water supply solution in remote areas

Features

- Water-cooled motor
- Advanced brushless dc motor offers maximum efficiency and energy save
- MPPT and DSP Technology
- Can be powered by various source
- Built-in Intelligent controller
- Various Protection functions





6"/8"/10" LS

Stainless Steel Submersible Borehole Pump

Technical Data

- Max. flow: 270 m³/h
- Max. head: 515 m
- Power range: 0.55 - 37 kW

Applications

- Suitable for clean water
- For water supply for wells or reservoirs
- For domestic use and industrial applications
- For garden use and irrigation

Features

- Pump size: 6",7",8"(Min well dia.)
- Long service life & High efficiency
- AISI 304 wetted parts
- Easy maintenance structure
- Pump connection in NEMA standard
- Built-in check valve to prevent damage to pump from back flow



6" LN

Noryl Impeller Submersible Borehole Pump

Technical Data

- Max. flow: 80 m³/h
- Max. head: 408 m
- Power range: 4 - 37 kW

Applications

- Suitable for clean water
- For water supply from wells or reservoirs
- For domestic use and industrial applications
- For garden use and irrigation

Features

- Pump size: 6"
- Long service life & High efficiency
- Engineering plastic impeller (Noryl)
- Easy maintenance structure
- Pump connection in NEMA standards
- Built-in check valve to prevent damage to pump from back flow



AKS

Garden Jet Pump

Technical Data

- Max. flow: 13.6 m³/h
- Max. head: 7.4 m
- Power range: 400 - 750 W
- Outlet: 1.5"

Applications

- Transfer of clean water or dirty water
- Suitable to lift water from wells or ponds
- Drain water from basement
- For small equipment and water supply system

Features

- Built-in thermal protector
- Insulation class: F
- Protection class: IPX8



EKJ

Garden Jet Pump

Technical Data

- Max. flow: 4.8 m³/h
- Max. head: 48 m
- Power range: 600 - 1200 W

Applications

- Transfer of clean water or other liquid similar to water in physical and chemical properties
- Water supply and drainage in garden
- Pressure boosting

Features

- Built-in thermal protector
- Insulation class: F
- Protection class: IPX4



6"/8"/10" LC

Cast Iron Impeller Submersible Borehole Pump

Technical Data

- Max. flow: 378 m³/h
- Max. head: 446 m
- Power range: 6 - 250 kW

Applications

- Suitable for clean water
- For water supply for wells or reservoirs
- For domestic use and industrial applications
- For garden use and irrigation

Features

- Pump size: 6",7",8"(Min well dia.)
- Long service life & High efficiency
- Cast iron wetted parts
- Easy maintenance structure
- Pump connection in NEMA standard
- Built-in check valve to prevent damage to pump from back flow



XKF

Fountain Pump

Technical Data

- Max. flow: 62.5 l/min
- Max. head: 3.7 m
- Input power range: 6 - 110 W
- Outlet: 13 - 19 mm

Applications

- Supplying flow of water to fountains and devices used for aesthetic purposes
- Aeration in residential and commercial applications

Features

- Ideal for small displays, fountains and waterfalls
- Choice of 5 fountain heads (cascade, water bell, foaming jet, lily & trumpet)
- 10 m cable



LKS

Multistage Impeller Submersible Pump

Technical Data

- Max. flow: 7 m³/h
- Max. head: 52 m
- Power range: 900 - 1300 W
- Outlet: 1"

Applications

- This pump is mainly used for use in tradition wells, water deposits and collection tanks
- Also suitable for small scale irrigation systems

Features

- Built-in thermal protector
- Insulation class: F
- Protection class: IPX8



LKS-SE

Automatic Submersible Pressure Pump

Technical Data

- Max. flow: 6 m³/h
- Max. head: 45 m
- Power range: 900 - 1100 W
- Outlet: 1"

Applications

- Transfer of clean water or dirty water
- Suitable to lift water from wells or ponds
- Drain water from basements, bathroom, etc.
- For small equipment and water supply system

Features

- Built-in integrated electronics
- Automatic start and stop
- Dry-running protection
- Protection class: IPX8

**LSPA****Bathtub Pump****Technical Data**

- Max. flow: 430 l/min
- Max. head: 14 m
- Power range: 300 - 1300 W (0.4 - 1.7 HP)
- Inlet/Outlet: 32 mm, 50 mm

Applications

- Water circulation for hydromassage, swimming pool, Fish farming
- Bath & swimming pool water supply

Features

- Built in terminal protector
- Engineering plastic pump body and wetted parts
- AISI304 fabricated shaft.
- Insulation class: F
- Protection class: IPX5
- Equipped with air switch
- S1 Duty

**XKP****Pool Pump****Technical Data**

- Max. flow: 500 l/min
- Max. head: 17.8 m
- Power range: 250 - 2200 W (0.33 - 3 HP)
- Inlet/Outlet: 40 mm /40 mm; 50 mm /50 mm

Applications

- Transfer of clean water or other liquids similar to water in physical and chemical properties
- Water circulation with filter function in small and medium-sized swimming pools

Features

- Built-in terminal protector
- Engineering plastic pump body
- AISI 304 fabricated shaft
- Insulation class: F
- Protection class: IPX5

**LGP-C****Gasoline Engine Pump****Technical Data**

- Flow range: 60 m³/h
- Head range: 32 m
- Power range: 6.5 HP
- Inlet/Outlet: 2"/2"; 3"/3"

Applications

- Transfer clean water or other liquids similar to water in physical and chemical properties
- Water supply and drainage for factories, mines, municipal facilities, etc.
- Fire fighting

Features

- High efficiency hydraulic system
- Low fuel consumption
- Anti-rust impeller and diffuser
- High quality forged steel crankshaft

**LGP20i-A****Cast Iron Gasoline Engine Pump****Technical Data**

- Flow range: 25 m³/h
- Head range: 51 m
- Power range: 6.5 HP
- Inlet/Outlet: 2"/2"

Applications

- Transfer clean water or other liquids similar to water in physical and chemical properties
- Water supply and drainage for factories, mines, municipal facilities, etc.
- Fire fighting

Features

- Cast iron pump body with e-coating
- High efficiency hydraulic system
- Low fuel consumption
- Anti-rust impeller and diffuser
- High quality forged steel crankshaft

**WC****Domestic Lifting Station****Technical Data**

- Max. flow: 85 l/min
- Max. head: 8.7 m
- Power range: 600 W

Applications

- Suitable for pumping of wastewater off places in private dwellings and basements
- Typically used for toilets, wash basins, bathtubs, cabinet showers, washing machines, etc.

Features

- Easy installation and free from maintenance
- High efficient cutting system
- Top quality air switch and carbon filter
- Circuit board inside for time delay operation and low voltage protection

**LDP****Diesel Water Pump****Technical Data**

- Max. flow: 916.7 l/min
- Max. head: 31 m
- Power range: 3.8 HP
- Inlet/outlet: 2"/2"; 3"/3"

Applications

- Transfer of clean water or other liquids similar to water in physical and chemical properties
- Applicable in water supply and drainage for factories, mines, municipal facilities, etc.
- Fire fighting

Features

- High efficient hydraulic system
- Low fuel consumption
- Unique mechanical seal
- Anti-rust impeller and diffuser
- High quality forged steel crankshaft

**LGP-W****Gasoline Sewage Pump****Technical Data**

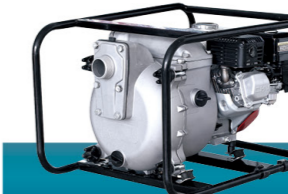
- Max. flow: 1000 l/min
- Max. head: 29 m
- Power range: 6.5 HP
- Inlet/Outlet: 3"/3"

Applications

- Field irrigation and agricultural drainage
- Drainage of spring water, sludge and solids at civil engineering and construction sites
- Feed/Drainage of water containing foreign objects
- Drainage in case of disaster

Features

- High efficient hydraulic system
- Original design offers ease of maintenance
- Low fuel consumption
- Highly reliable gasoline engine
- Strengthened aluminium alloy pump body

**LGP-T****Cast Iron Trash Pump****Technical Data**

- Max. flow: 40 m³/h
- Max. head: 25 m
- Power range: 5 HP
- Inlet/Outlet: 2"/2"

Applications

- Sewage water transfer
- Water supply and drainage for factories, mines, municipal facilities, etc.

Features

- Aluminum alloy pump body
- Anti-rust cast iron impeller
- Low fuel consumption
- Anti-rust impeller and diffuser
- High quality forged steel crankshaft
- Honda engine

**KB/PB/LB****Gasoline Engine Generator****Technical Data**

- Max. output power: 7 kW
- Fuel tank: 13 - 28 L
- Max. displacement: 420 cc

Features

- Intelligent system
- Extra large fuel tank
- Pointer type fuel level indicator
- Moving without gravity
- Smart throttle

**BRP****Circulation Pump****Technical Data**

- Max. flow: 2.8 m³/h
- Max. head: 7.0 m
- Power range: 45 - 120 W

Applications

- Hot & cold water circulation system
- Wall-mounted gas boiler
- Cooling system

Features

- Permanent magnet frequency converter motor
- Multiple control modes (Constant pressure, proportional pressure, Constant speed)
- Scale protection
- Low noise
- Easy maintenance
- Compact structure

**LPm****Booster pump****Technical Data**

- Max. flow: 325 l/min
- Max. head: 30.8 m
- Power range: 0.125-0.75 kW (0.17 - 1 HP)
- In/Outlet: 1"/1"; 1.5"/1.5"; 2"/2"; 2.5"/2.5"

Applications

- Hot water boosting for sauna, bathing and solves insufficient water pressure in high-rise building
- Domestic water supply

Features

- Anti-rust treatment for wetted parts
- AISI304 shaft
- Insulation class: F
- Protection class: IP44

**LP****Circulation Pump****Technical Data**

- Max. flow : 533 l/min
- Max. head : 34 m
- Power range: 1.5 – 2.2 kW (2 - 3 HP)

Applications

- Hot water circulation and heating system
- Air-conditioning system
- Industrial circulation system
- General pressure boosting in household

Features

- Copper winding
- Anti-rust treatment for wetted parts
- AISI 304 fabricated shaft
- Insulation class: B
- Protection class: IP44

**LRP****Circulation Pump****Technical Data**

- Max. flow: 170 l/min
- Max. head: 12 m
- Power range: 40 - 270 W
- DN: 15 - 40 mm

Applications

- HVAC and pressure booting of hot water in family
- Water circulation for central and district heating system
- Domestic hot water circulation
- Automatic pressure boosting

Features

- Noryl impeller with heat resistance up to 150° C
- 99% alumina ceramic shaft
- Insulation class: H
- Protection class: IP44
- Three speed motor

**LRP-A****Booster Pump****Technical Data**

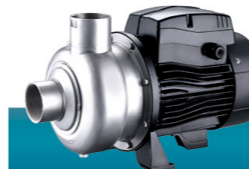
- Max. flow: 25 l/min
- Max. head: 9 m
- Power range: 123 W

Applications

- Pressure boosting for domestic water supply
- Floor heating system
- Solar pumping system

Features

- Automatic pressure boosting
- Anti-rust cast iron pump body
- Noryl impeller with heat resistance up to 150° C
- 99% alumina ceramic shaft
- Insulation class: H
- Protection class: IP42

**ABK****Semi-open impeller stainless-steel centrifugal pump****Technical Data**

- Max. flow: 66 m³/h
- Max. head: 17.5 m
- Power range: 0.37 - 3 kW (0.5 - 4 HP)

Applications

- Suitable for circulation cleaning system of various production lines and transporting media containing impurities.

Features

- Stainless steel pump body
- AISI 304 fabricated shaft
- Insulation class: F
- Protection class: IPX4

**AMS****Stainless Steel Centrifugal Pump****Technical Data**

- Max. flow: 520 l/min
- Max. head: 30.2 m
- Power range: 0.37 - 2.2 kW (0.4 - 3 HP)
- DN: 25 - 50 mm

Applications

- Transfer of clean water or other liquids similar to water in physical and chemical properties
- Water circulation and water treatment system
- Agricultural irrigation

Features

- Stainless steel pump body
- AISI 304 fabricated shaft
- Built-in terminal protector for single phase motor
- Insulation class: F
- Protection class: IPX4

**ECH-D****Horizontal Multistage Pump****Technical Data**

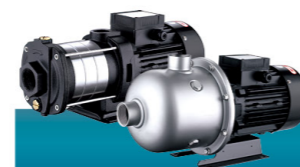
- Max. flow: 7 m³/h
- Max. head: 36 m
- Power range: 0.37 - 75 kW
- DN: 25 mm

Applications

- It is applicable to household water supply, equipment support, pipeline pressurization, garden watering, vegetable greenhouse watering, fish farming and poultry raising, industrial and mining, water supply and drainage of enterprises and high-rise buildings, central air conditioner and centralized heating circulation system, etc.

Features

- Copper winding
- Built-in terminal protector for single phase
- Insulation class: F
- Protection class: IP55

**ECH/EDH-F****Stainless Steel Horizontal Multistage Pump****Technical Data**

- Max. flow: 517 l/min
- Max. head: 58 m
- Power range: 0.37 - 4 kW (0.4 - 5.5 HP)
- DN: 25 - 50 mm

Applications

- Household water supply
- Pipeline pressurization
- Industrial and mining
- Fish farming and poultry raising
- Central air conditioning and heating circulation system

Features

- Copper winding
- AISI 304 fabricated shaft
- Built-in thermal protector
- Insulation class: F
- Protection class: IP44

**BP****Pressure Booster System****Technical Data**

- Max. flow: 517 l/min
- Max. head: 55 m
- Power range: 0.37 - 4 kW (0.5 - 5.5 HP)

Applications

- Pressure boosting for water supply and boosting in domestic and light commercial applications.

Features

- Constant pressure with integrated speed control
- Dry running protection with auto-restart
- Easy installation & operation
- Quiet operation
- Stainless steel construction for long life
- Built-in non-return valve

**MAC****Permanent Magnet Intelligent Booster****Technical Data**

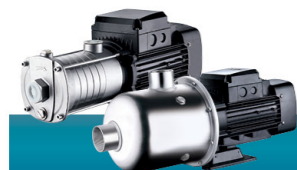
- Max. flow: 4.8 m³/h
- Max. head: 40 m
- Max. power: 550 W
- Connector size: G1"

Applications

- Water supply and pressure boosting for all domestic application
- Garden watering, building water supply and agriculture

Features

- Permanent magnet motor
- Easy manipulation
- Protective functions
- Energy saving
- Space saving
- Low noise

**ECH/EDH****Stainless Steel Horizontal Multistage Pump****Technical Data**

- Max. flow: 517 l/min
- Max. head: 55 m
- Power range: 0.37 - 4 kW (0.4 - 5.5 HP)
- DN: 25 - 50 mm

Applications

- Household water supply
- Pipeline pressurization
- Industrial and mining
- Fish farming and poultry raising
- Central air conditioning and heating circulation system

Features

- Copper winding
- AISI 304 fabricated shaft
- Built-in thermal protector
- Insulation class: F
- Protection class: IP55

**ECH/EDH-E****Pump With Automatic Electronic Pressure Switch****Technical Data**

- Max. flow: 517 l/min
- Max. head: 55 m
- Power range: 0.37 - 4 kW (0.4 - 5.5 HP)

Applications

- Mains boosting
- Household water supply
- Boosting from above ground water tanks
- Light industrial use

Features

- Compact structure
- Reliable stainless steel construction for long lifespan
- Easy installation & operation
- Dry running protection

**XST****Standard Centrifugal Pump****Technical Data**

- Max. flow: 210 m³/h
- Max. head: 95 m
- Power range: 0.75 - 55 kW (1 - 75 HP)
- DN: 32 - 80 mm

Applications

- Water in air conditioning systems
- Circulation & transfer of water
- Agricultural irrigation

Features

- Cast iron pump body
- Stainless steel shaft
- Cast iron/stainless steel impeller
- Overload protection
- Insulation class: F
- Protection class: IP54

**XZS****Stainless Steel Standard Centrifugal Pump****Technical Data**

- Max. flow: 132 m³/h
- Max. head: 58 m
- Power range: 1.1 - 22 kW (1.5 - 30 HP)
- DN: 32 - 65 mm

Applications

- Water supply and irrigation
- Boiler feeding and pure water treatment system
- Washing and cleaning system

Features

- IE2 motor
- Closed coupled construction
- Insulation class: F
- Protection class: IP55



LEP

End Suction Centrifugal Pump

Technical Data

- Max. flow: 1584 m³/h
- Max. head: 152 m
- Power range: 0.55 - 200 kW (0.7 - 272 HP)
- DN: 50 - 350 mm

Applications

- Water supply systems
- Pressure boosting
- Heating systems for commercial buildings
- Industrial applications
- Fire fighting

Features

- Cast iron/stainless steel pump body
- Stainless steel shaft
- Bronze/stainless steel/cast iron impeller
- NSK bearing
- Max operation pressure: 10 bar



LEN

End Suction Centrifugal Pump

Technical Data

- Max. flow: 366 m³/h
- Max. head: 39.5 m
- Power range: 2.2 - 30 kW (3 - 40 HP)
- DN: 80 - 125 mm

Applications

- Water supply systems
- Pressure boosting
- Heating systems for commercial buildings
- Industrial applications
- Fire fighting

Features

- Cast iron pump body
- Stainless steel shaft
- Cast iron/stainless steel impeller
- Max operation pressure: 16 bar



LPP

Vertical In-line Pump

Technical Data

- Max. flow: 760 m³/h
- Max. head: 88 m
- Power range: 0.37 - 132 kW (0.5 - 177 HP)
- DN: 32 - 250 mm

Applications

- HVAC: Circulation of hot water, boiler mix-flow, etc.
- Air conditioning system: Cooling water circulation
- Water supply system: Filtration and transfer at water works
- Industrial applications
- Fire fighting

Features

- Stainless steel shaft
- Cast iron/stainless steel impeller
- Max operation pressure: 16 bar
- Dry running protection with mechanical seal
- Insulation class: F



EVP

Stainless Steel Vertical Multistage Pump

Technical Data

- Max. flow: 267 l/min
- Max. head: 150 m
- Power range: 0.37 - 7.5 kW (0.4 - 10 HP)
- DN: 25 - 38 mm

Applications

- Water supply: Pressure boosting for main pipes and high-rise buildings
- Industrial pressure boosting: Water system, cleaning system, high pressure washing system and firefighting system
- Pressure boosting for pressure tank, sprinkling irrigation and trichling irrigation
- Air conditioning, cooling system and industrial cleaning

Features

- High strength engineering plastic impeller
- Cast iron inlet and outlet with special anti-rust treatment
- AISI 304 fabricated shaft
- Max. pressure: 10 bar



GSX

Horizontal Split Case Fire Pump

Technical Data

- Flow range: 113.5 - 227 m³/h
- Pressure range: 5.18 - 21.93 bar
- Inlet diameter: 6", 8"

Applications

- Water supply and boosting for fire fighting system in industrial and commercial facilities.

Features

- High efficiency pump casing
- Safty and reliable split structure
- Low volume loss seal ring design
- Thicker shaft provides good rigidity and stable operation
- Grease lubricated deep groove ball bearing
- Interlaced designed adjacent vanes with V-type discharge has good flowing, low pulsation, low vibration and high efficiency



GS

Split Casing Centrifugal Pump

Technical Data

- Outlet: 150 - 1800 mm
- Max. flow: 38000 m³/h
- Max. head: 205 m



LVS/LVR

Stainless Steel Vertical Multistage Pump

Technical Data

- Max. flow: 240 m³/h
- Max. head: 323 m
- Power range: 0.37 - 110 kW (0.5 - 150 HP)
- DN: 25 - 150 mm

Applications

- Water supply & drainage for high-rise buildings, filtration and transfer at waterworks, pressure boosting in main pipe
- Washing and cleaning systems, boiler feeding, cooling water circulation, water treatment systems and auxiliary system
- Ultra-filtration systems, reverse osmosis systems, distillation systems, separators, swimming pools
- Sprinkler irrigation, drip-feed irrigation
- Food & beverage industry
- Fire fighting system

Features

- Totally enclosed & fan-cooled motor
- Liquid temperature: -20° C - +120° C
- Protection class: IP55
- Max. pressure: 33 bar



BWS

Pressure Booster System

Technical Data

- Max. flow: 1080 m³/h
- Max. head: 330 m
- DN: 25 - 100 mm

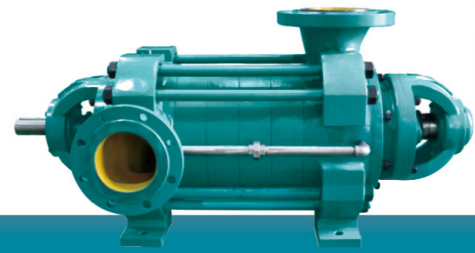
Applications

- Pressure boosting for fire fighting pumps, commercial complexes, hotels, industries, airports, metros, etc.



• Pump Manufacturing Base for **General Industrial Pumps** (Xiangtan City)
R&D, manufacturing and testing center of LEO group

D/MD



Multistage Centrifugal Pump

Technical Data

- In/Outlet: 40 - 300 mm
- Max. flow: 800 m³/h
- Max. head: 800 m

HLB/HLBK



Vertical Mixed Flow Pump

Technical Data

- Outlet: 350 - 3500 mm
- Max. flow: 72000 m³/h
- Max. head: 50 m

GLN



Vertical Multistage Condensate Pump

Technical Data

- Inlet: 250 - 900 mm
- Max. flow: 2200 m³/h
- Max. head: 360 m

ZLB (Q)



Vertical Axial Flow Pump

Technical Data

- Outlet: 300 - 4000 mm
- Max. flow : 180000 m³/h
- Max. head: 15 m

WLZ/WZY



Leak-Free Self-Priming Pump

Technical Data

- In/Outlet: 50 - 350 mm
- Max. flow: 1200 m³/h
- Max. head :80 m

LC



Long Shaft Pump

Technical Data

- Outlet: 150 - 1000 mm
- Max. flow: 8400 m³/h
- Max. head: 94.5 m

HD (S)



Guide Vane Mixed Flow Pump

Technical Data

- Outlet: 350 - 3000 mm
- Max. flow : 160000 m³/h
- Max. head: 25 m

QZ/QHD



Submersible Pump

Technical Data

- Outlet: 350 - 1800 mm
- Max. flow: 8500 m³/h
- Max. head: 25 m



• Pump Manufacturing Base for Petrochemical Industry (Dalian City)
Specialized in production of petrochemical pumps

QW



Submersible Pump

Technical Data

- Outlet: 25 - 800 mm
- Max. flow: 7500 m³/h
- Max. head: 50 m

LW



Vertical Volute Pump

Technical Data

- Outlet: 450 - 1800 mm
- Max. flow: 29000 m³/h
- Max. head: 60 m

OH (OH-1/2)



Single Stage Overhang Pump

Technical Data

- Max. flow: 2400 m³/h
- Max. head: 250 m
- Max. work pressure: 10.0 Mpa
- Liquid temperature range: -80 ~ 450 °C
- Standard: API610

OH (OH-3)



Vertical Piping Pumps

Technical Data

- Max. flow: 2400 m³/h
- Max. head: 250 m
- Max. work pressure: 5 MPa
- Liquid temperature range: -60 ~ 250 °C
- Standard : API610

A (BBI)

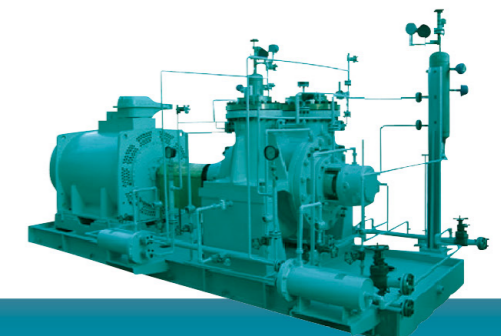


Axial Split Horizontal Centrifugal Pump

Technical Data

- Max. flow: 12000 m³/h(Single Stage) / 3600 m³/h(Two Stage)
- Max. head: 300 m(Single Stage) / 440 m(Two Stage)
- Max. work pressure: 15.0 MPa
- Liquid temperature range: -60 ~ 200 °C
- Standard: API610

HR (BB2)



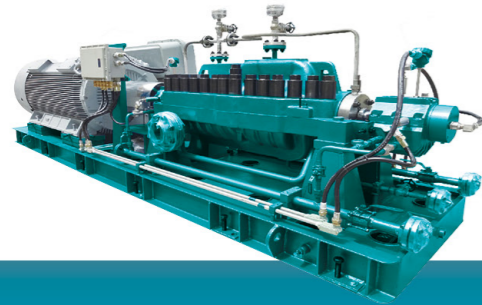
Radial Split Horizontal Centrifugal Pumps

Technical Data

- Max. flow: 4500 m³/h
- Max. head: 250 m
- Max. work pressure: 15 MPa
- Liquid temperature range: -80 ~ 450 °C
- Standard: API610



MA (BB3)

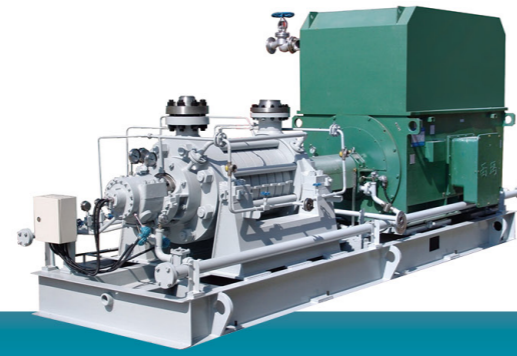


Axial Split Horizontal Centrifugal Pumps

Technical Data

- Max. flow : 1400 m³/h
- Max. head: 2000 m
- Max. work pressure: 25 Mpa
- Liquid temperature range: -60 ~ 200 °C
- Standard: API610

M (BB4)



Radial Split Horizontal Centrifugal Pumps

Technical Data

- Max. flow: 1200 m³/h
- Max. head: 2000 m
- Max. work pressure: 25.0 MPa
- Liquid temperature range: -60 ~ 250 °C
- Standard: API610

TV (V51/V56)

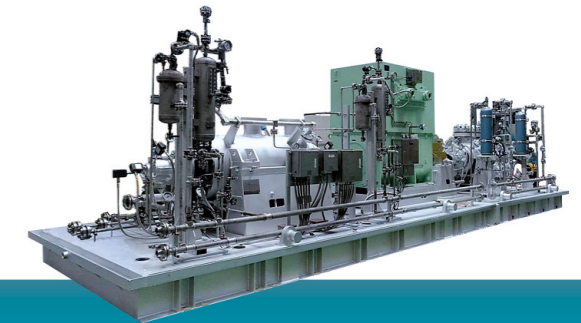


Vertical Suspended Centrifugal Pump

Technical Data

- Max. flow: 1000 m³/h
- Max. head: 1000 m
- Max. work pressure: 15 MPa
- Liquid temperature range: -100 ~ 250 °C
- Standard range: API610

HT

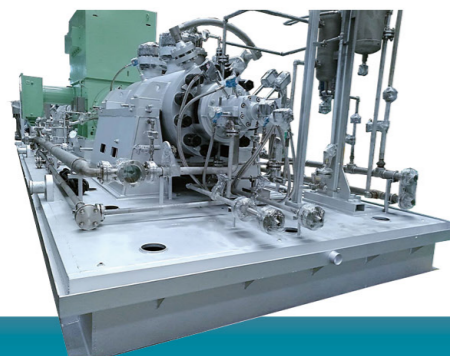


Hydraulic Power Recovery Turbine

Technical Data

- Max. flow: 10000 m³/h
- Max. head: 3500 m
- Max. work pressure: 35 MPa
- Liquid temperature range: -80 ~ 450 °C
- Standard: API610

T (BB5)



Radial Split Horizontal Centrifugal Pumps

Technical Data

- Max. flow: 1400 m³/h
- Max. head: 3600 m
- Max. work pressure: 42.0 MPa
- Liquid temperature range: -80 ~ 450 °C
- Standard: API610

HY/HL/HRY (V54)



Vertical Centrifugal Pump

Technical Data

- Max. flow: 1000 m³/h
- Max. head: 125 m
- Max. work pressure: 2.5 MPa
- Liquid temperature range: -80 ~ 500 °C
- Standard: API610

HLB/HNB (V55)



Vertical Centrifugal Pump

Technical Data

- Max. flow: 1200 m³/h
- Max. head: 60 m
- Max. work pressure: 2.5 MPa
- Liquid temperature range: -20 ~ 200 °C
- Max. immersion depth: 1.5 m
- Standard: API610



Fix Membrane Tank

- Type: Horizontal tank, Vertical tank, Vertical tank with foot
- Capacity: 2-150 L
- Max. Pressure: 16 bar
- Max. Temperature: +99 °C
- Connection: 1" BSP/NPT



Tank

- Type: horizontal tank, vertical tank, vertical flat tank
- Capacity range: 2 - 100 L
- Max. pressure: 8 bar
- Max. temperature: 99 °C
- Connection: G1/2" , G1"



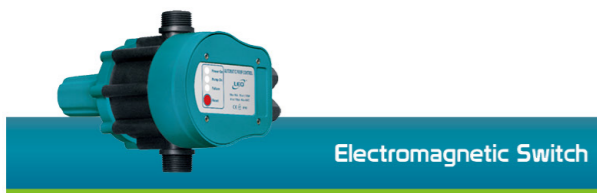
Pressure Gauge

- Two connection types: (1) G1/4" , (2) M10X1
- 40 mm gauge with scale of 0 - 6 bar
- 50 mm gauge with scale of 0 - 10 bar or 0 - 6 bar
- Back/bottom connection



Flexible Hose

- Type: FH12.8-01, FH44-03
- Inlet: G3/4" , G1"
- Outlet: G3/8" , G1"
- Material: stainless steel wire



Electromagnetic Switch

- Type: PS-04A, PS-04B, PS-04C
- Rated voltage: 220V - 240V / 110V - 120V
- Frequency: 50/60 Hz
- Max. power: 1.5 kW
- Starting pressure setting: 1.2 bar / 1.5 bar / 2.2 bar
- Max. operating pressure: 10 bar



Intelligent Controller

Rated Input Voltage

- Single phase: 220V/50Hz
- Three phase: 380V/50Hz

Features

- Over load protection
- Under/Over voltage protection
- Motor stalled protection
- Dry run protection with sensor free
- Open phase protection
- Leakage protection (customized)



Hose

- Length: 4m, 5m, 7m
- Diameter: 1"
- Max. liquid temperature : 35 °C



3-Way/5-Way

- Type: 3TA, 5TA, 5TB
- Connection: G1"
- Length: 70, 80, 90



Float Switch

- Type: FLO-01, FLO-01(with balance block)
- Specification: 5(4)250V, 10(8)125V
- Life time: 5000 cycles



Pressure Switch

- Type: PS-02B, PS-02C
- High precision
- High sensitivity
- Adjustable pressure range 1.4 - 5.6 bar
- G1/4"



Foot Valve

- Type: FVA1, FVA1.25, FVA1.5, FVA2, FVA3
- Connection: 1" - 3"
- Stainless steel mesh
- Can be used as a check valve



Filter

- Type: WF-01B, WF-02B
- Capacity: 1L, 2L
- Inlet/outlet: 1" x 1"
- Max. pressure: 5 bar